

BRAND NEW &amp; VERIFIED



## VERIFIED PRODUCT DATASHEET

**C1111-4P**

Cisco Network Hardware Specification, Availability and Quote Reference

<b>Product Model</b>	<b>C1111-4P</b>
<b>Document Type</b>	<b>Product Datasheet</b>
<b>Condition</b>	<b>Brand New, Original and Verifieded</b>
<b>Supplier</b>	<b>Layer23-Switch.com</b>

<b>200+</b> Countries Sold	<b>18,000+</b> Customers Trusted	<b>\$20M</b> Inventory Available	<b>1-Year</b> Warranty Support
-------------------------------	-------------------------------------	-------------------------------------	-----------------------------------

**Need Price or Availability?**

View product details, check stock, or request a fast quotation from Layer23-Switch.

[View Product Page & Request a Quote](#)



## C1111-4P Datasheet

---

The Cisco C1111-4P datasheet provides verified specifications, key features, and application scenarios. This document helps engineers and IT buyers quickly evaluate the C1111-4P and integrate it into enterprise or service provider networks with confidence.

[Read More](#) | [Quote](#)



---

## Key Features

---

### Integrated PoE Connectivity

Simplified Branch Cabling. The C1111-4P includes an integrated 4-port managed switch with PoE capability (66W budget). This allows you to connect and power essential branch devices like VoIP phones, security cameras, or a lightweight Access Point directly from the router, reducing cabling clutter and hardware costs.

### Enterprise Security Features

Trustworthy Defense. Despite its compact size, this router includes Cisco's comprehensive security stack. It features Trust Anchor technology, Secure Boot, and image signing to prevent hardware tampering. It also supports enterprise firewalling and intrusion prevention to secure the branch edge against internet threats.

### Cisco SD-WAN Capability

Cloud-Ready Architecture. This router is ready for the cloud era with support for Cisco SD-WAN. It allows IT teams to manage WAN links intelligently, optimize traffic for SaaS applications like Office 365, and deploy configurations remotely via vManage, simplifying operations across multiple sites.

### Silent Fanless Design

Quiet Operation. Engineered with a passive cooling architecture, the C1111-4P operates without any fan noise. This makes it the ideal choice for deployment in noise-sensitive environments such as open-plan offices, libraries, clinics, or retail counters where equipment hum is unacceptable.

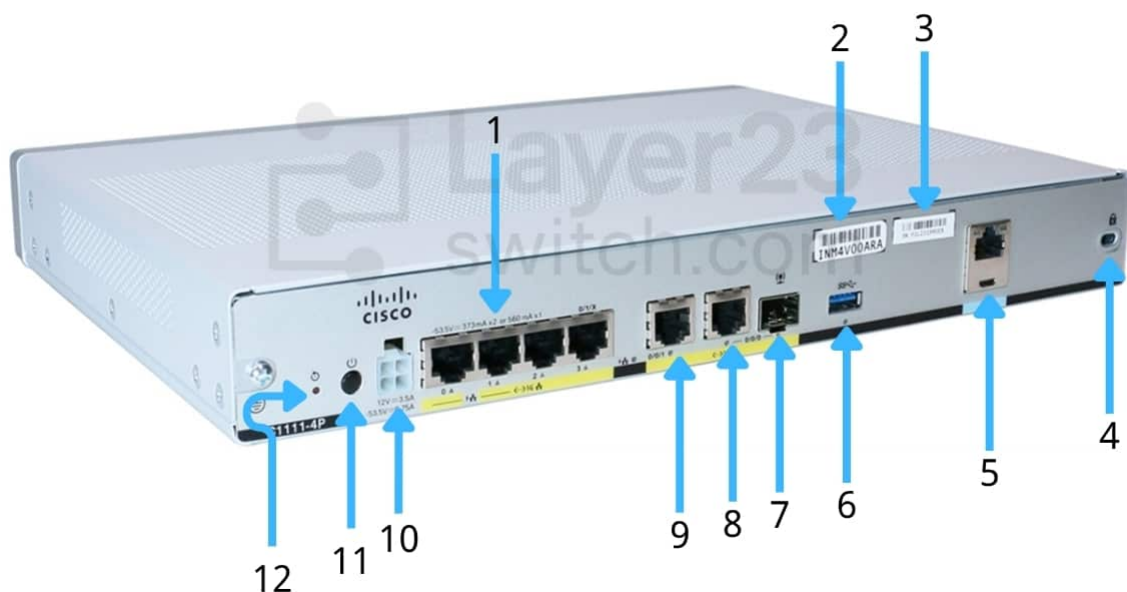
### Dual WAN Redundancy

Always-On Connectivity. Equipped with two WAN interfaces (one dedicated Gigabit Ethernet and one GE/SFP combo port), the router supports primary and backup internet connections. This ensures business continuity by automatically failing over to a secondary link if the primary ISP connection goes down.

### IOS XE Programmability

Standardized Management. Running on Cisco IOS XE, the C1111-4P supports open APIs like NETCONF and YANG. This allows for automated provisioning and consistent policy enforcement, enabling network engineers to manage this small router with the same tools used for large campus core switches.

## C1111-4P Rear Panel



①	LAN	⑦	GE 0/0/0 - SFP
②	CLEI Label	⑧	GE 0/0/0 - RJ45
③	Serial Number	⑨	GE 0/0/1
④	Kensington Lock Slot	⑩	4-pin Power Connector
⑤	RJ45 / Micro USB Console	□	Power Switch
⑥	USB3.0	□	Reset Button

## Specification

Parameter	Details	Parameter	Details
<b>Model SKU</b>	C1111-4P	<b>Series Family</b>	Cisco ISR 1100 Series
<b>WAN Interfaces</b>	1 x GE Copper, 1 x GE/SFP Combo	<b>LAN Interfaces</b>	4 x 10/100/1000 GE
<b>PoE Capability</b>	2x PoE or 1x PoE+ supported	<b>PoE Standard</b>	802.3af (PoE) / 802.3at (PoE+)
<b>PoE Power Budget</b>	66W (with standard 115W PSU)	<b>DRAM Memory</b>	4 GB
<b>Flash Memory</b>	4 GB	<b>Console Port</b>	1 x RJ-45, 1 x Micro-USB (USB 2.0)
<b>USB Port</b>	1 x USB 3.0 Type A	<b>Operating System</b>	Cisco IOS XE
<b>Bundled License</b>	IP Base	<b>Security Features</b>	Trust Anchor, Secure Boot, Image Signing, Zone-Based Firewall
<b>Routing Protocols</b>	OSPF, EIGRP, BGP, IS-IS, RIP	<b>VLAN Support</b>	802.1Q VLANs
<b>Traffic Management</b>	QoS, Class-Based Weighted Fair Queuing (CBWFQ)	<b>IPv6 Support</b>	IPv6 Routing, IPv6 QoS, IPv6 ACLs
<b>Power Supply</b>	External AC Adapter (115W)	<b>AC Input Voltage</b>	100 to 240 VAC
<b>AC Input Frequency</b>	50 to 60 Hz	<b>AC Input Current</b>	2.0A
<b>Dimensions (H x W x D)</b>	1.75 x 12.7 x 9.03 in (44 x 323 x 230 mm)	<b>Weight</b>	3.4 lb (1.55 kg)
<b>Mounting Options</b>	Desktop, Wall-mount, Rack-mount (Optional Kit)	<b>Fan Status</b>	Fanless (0 dB noise)
<b>Operating Temperature</b>	32°F to 104°F (0°C to 40°C)	<b>Storage Temperature</b>	-4°F to 149°F (-20°C to 65°C)
<b>Operating Humidity</b>	5% to 95% non-condensing	<b>Operating Altitude</b>	Up to 10,000 ft (3000 m)
<b>MTBF (Hours)</b>	708,320	<b>Safety Certifications</b>	UL 60950-1, CAN/CSA C22.2 No. 60950-1, EN 60950-1
<b>EMC Certifications</b>	FCC Part 15 Class A, EN 55032, CISPR 32	<b>Immunity Certifications</b>	EN 55024, CISPR 24

## Want to Buy

[Order Now](#) [Get a Quote](#)

## Why Layer23-Switch.com

---

As a leading network hardware supplier, Layer23-Switch.com focuses on original new ICT equipment of Cisco, H3C, Juniper, etc.

<b>200+</b> Countries we Sold	<b>18,000+</b> Customers Trusted	<b>\$20,000,000</b> Inventory Available	<b>50%-98%</b> Off Global List Price	<b>100%</b> Safe Online Shopping
----------------------------------	-------------------------------------	--	---	-------------------------------------

## Contact Us

---

- WhatsApp: [+8617181189993](https://wa.me/8617181189993)
- Wechat: [layer23-switch](#)
- Telegram: [layer23\\_switch](#)
- Email: [sales@layer23-switch.com](mailto:sales@layer23-switch.com)

### Need Price and Availability for C1111-4P?

View product details, request a quote, or check current stock from Layer23-Switch.

[View Product Details & Request a Quote](#)