

BRAND NEW & VERIFIED



VERIFIED PRODUCT DATASHEET

C1300-16P-2G

Cisco Network Hardware Specification, Availability and Quote Reference

Product Model	C1300-16P-2G
Document Type	Product Datasheet
Condition	Brand New, Original and Verifieded
Supplier	Layer23-Switch.com

200+ Countries Sold	18,000+ Customers Trusted	\$20M Inventory Available	1-Year Warranty Support
-------------------------------	-------------------------------------	-------------------------------------	-----------------------------------

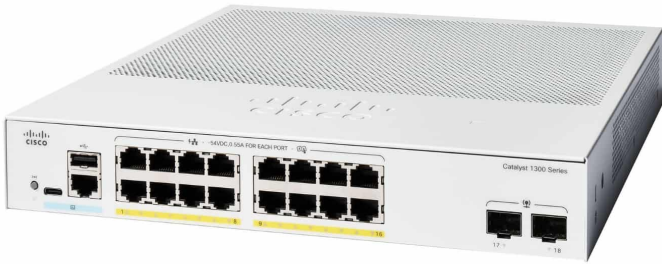
Need Price or Availability?

View product details, check stock, or request a fast quotation from Layer23-Switch.

[View Product Page & Request a Quote](#)



C1300-16P-2G Datasheet



The Cisco C1300-16P-2G datasheet provides verified specifications, key features, and application scenarios. This document helps engineers and IT buyers quickly evaluate the C1300-16P-2G and integrate it into enterprise or service provider networks with confidence.

[Read More](#) | [Quote](#)

Key Features

16x PoE+ Gigabit Ethernet Ports

Deliver power and data to IP phones, access points, and cameras over a single cable (PoE switch, Power over Ethernet, PoE+).

2x SFP Fiber Uplink Ports

Enable flexible, high-speed backbone connections to other switches or routers (SFP uplink, fiber uplink, combo uplink).

120W Total PoE Power Budget

Supports deployment of multiple high-power devices for unified communications, wireless, and surveillance (high power, PoE+, powered switch).

Layer 3 Advanced Management

Provides static routing, inter-VLAN routing, and IPv6 support for advanced segmentation and scalability (Layer 3, managed switch, VLAN switch).

Enterprise-Grade Security

Integrated 802.1X authentication, ACLs, DHCP snooping, and port security to protect business-critical data (network security, secure switch).

Silent, Fanless Operation

Perfect for open offices, classrooms, and retail spaces requiring quiet, reliable networking (compact switch, silent, noiseless).

Specification

Parameter	Details	Parameter	Details
Model	C1300-16P-2G	Product Type	Managed Layer 3 Gigabit Ethernet Switch
Total Ports	18 (16 × 10/100/1000 PoE+, 2 × SFP)	Switching Capacity	36 Gbps
Forwarding Rate	26.78 mpps	PoE+ Support	16 Ports, 120W Total Budget, IEEE 802.3at/af
Uplink Ports	2 × SFP (Gigabit fiber)	Packet Buffer	1.5 MB
MAC Address Table	16,000	VLANs Supported	4093
Jumbo Frames	Up to 9000 bytes	Flash/DRAM	512 MB / 1 GB DDR4
CPU	ARM dual-core 1.4 GHz	Power Consumption	Max 152.7W (110V), 151.8W (220V)
Dimensions (W×D×H)	268 × 297 × 44 mm	Weight	2.38 kg
MTBF	412,959 hours (fanless)	Operating Temp.	-5°C to 50°C
Stacking Support	Not Supported	Fan	Fanless
Management	Web GUI, CLI, Cisco Business Dashboard, SNMP	Certifications	UL, CSA, CE, FCC Part 15 Class A
Warranty	Limited Lifetime, RTF Replacement	Included Accessories	Power cord, pointer card, mounting kit

Want to Buy

[Order Now](#) [Get a Quote](#)

Why Layer23-Switch.com

As a leading network hardware supplier, Layer23-Switch.com focuses on original new ICT equipment of Cisco, H3C, Juniper, etc.

200+ Countries we Sold
18,000+ Customers Trusted
\$20,000,000 Inventory Available
50%-98% Off Global List Price
100% Safe Online Shopping

Contact Us

- WhatsApp: [+8617181189993](https://wa.me/+8617181189993)
- Wechat: [layer23-switch](https://weixin.qq.com/friendchat?biz=layer23-switch)
- Telegram: [layer23_switch](https://t.me/layer23_switch)
- Email: sales@layer23-switch.com

Need Price and Availability for C1300-16P-2G?

View product details, request a quote, or check current stock from Layer23-Switch.

[View Product Details & Request a Quote](#)