

BRAND NEW & VERIFIED



VERIFIED PRODUCT DATASHEET

C1300-24P-4G

Cisco Network Hardware Specification, Availability and Quote Reference

| | |
|----------------------|---|
| Product Model | C1300-24P-4G |
| Document Type | Product Datasheet |
| Condition | Brand New, Original and Verifieded |
| Supplier | Layer23-Switch.com |

| | | | |
|-------------------------------|-------------------------------------|-------------------------------------|-----------------------------------|
| 200+ Countries Sold | 18,000+ Customers Trusted | \$20M Inventory Available | 1-Year Warranty Support |
|-------------------------------|-------------------------------------|-------------------------------------|-----------------------------------|

Need Price or Availability?

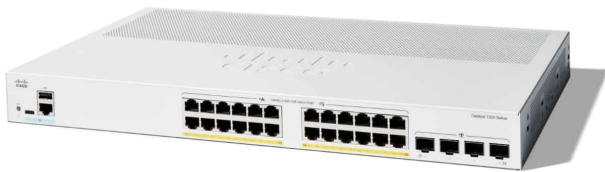
View product details, check stock, or request a fast quotation from Layer23-Switch.

[View Product Page & Request a Quote](#)



C1300-24P-4G Datasheet

The Cisco C1300-24P-4G datasheet provides verified specifications, key features, and application scenarios. This document helps engineers and IT buyers quickly evaluate the C1300-24P-4G and integrate it into enterprise or service provider networks with confidence.



[Read More](#) | [Quote](#)

Key Features

Power over Ethernet Plus (PoE+)

Simplified Deployment. The switch delivers up to 30W of power per port with a total budget of 195W. This allows you to deploy Wireless Access Points (Wi-Fi 6), PTZ IP cameras, and videophones using a single Ethernet cable for both data and power, reducing installation costs and clutter.

Intuitive Management Options

Easy Operation. Whether you prefer a traditional CLI or a modern graphical interface, the C1300 supports both. The Cisco Business Dashboard and mobile app allow remote management and monitoring, enabling non-technical staff to troubleshoot basic connectivity issues easily.

Advanced Layer 3 Routing

Network Efficiency. Unlike basic Layer 2 switches, this model supports IPv4 and IPv6 static routing. This allows you to segment your network into workgroups and route traffic locally between VLANs without overloading your main firewall or router, improving overall network performance.

Enterprise-Grade Security

Robust Protection. Includes advanced security features such as IEEE 802.1X port security, Access Control Lists (ACLs), and DoS attack prevention. It ensures that only authorized users and devices connect to your network, mitigating internal and external threats.

Eco-Friendly Design

Energy Efficiency. Compliant with IEEE 802.3az Energy Efficient Ethernet (EEE), the switch automatically reduces power consumption on inactive links. This lowers operational costs and contributes to your organization's sustainability goals without compromising performance.

Investment Protection

Seamless Migration. As the direct successor to the Cisco Business 350 (CBS350) series, the Catalyst 1300 offers updated hardware (faster CPU) and software while maintaining a familiar price point, ensuring a smooth upgrade path for existing Cisco SMB customers.

Specification

| Parameter | Details | Parameter | Details |
|--|---|---------------------------------|---|
| Model SKU | C1300-24P-4G | Product Series | Cisco Catalyst 1300 Series |
| Processor (CPU) | Dual-core ARM 1.4 GHz | Operating System | Linux-based OS |
| DRAM Memory | 1 GB DDR4 | Flash Memory | 512 MB |
| Total System Ports | 28 Gigabit Ethernet | Copper Ports (Downlink) | 24 x 10/100/1000 RJ-45 PoE+ |
| Uplink Interfaces | 4 x Gigabit SFP | Console Port | 1 x RJ-45 (Console), 1 x USB Type-C (Console) |
| USB Interface | 1 x USB Type-A (Front Panel) | Buttons | Reset button |
| PoE Standard | 802.3af (PoE) / 802.3at (PoE+) | PoE Power Budget | 195 W |
| Switching Capacity | 56 Gbps | Forwarding Rate | 41.66 Mpps (64-byte packets) |
| MAC Address Table | 16,000 Entries | Packet Buffer | 1.5 MB |
| Jumbo Frames | Up to 9,000 bytes | VLAN IDs | 4,094 Active VLANs |
| Layer 3 Routing | IPv4 / IPv6 Static Routing | Max IP Interfaces | 128 |
| Power Supply | Internal, 100-240V, 50-60 Hz | System Power Consumption | 110V=34.6W / 220V=33.5W (No PoE) |
| Max Power Consumption | 110V=239.2W / 220V=235.8W (Full PoE) | Heat Dissipation | 816.35 BTU/hr (Full Load) |
| Fan System | 1 Fan | Acoustic Noise | 28.6 dBA (at 25°C) |
| MTBF (Mean Time Between Failures) | 698,220 Hours (at 25°C) | Green Ethernet | IEEE 802.3az EEE Supported |
| Dimensions (W x D x H) | 17.5 x 11.81 x 1.73 in (445 x 300 x 44 mm) | Weight | 7.74 lb (3.51 kg) |
| Operating Temperature | 23°F to 122°F (-5°C to 50°C) | Storage Temperature | -13°F to 158°F (-25°C to 70°C) |
| Operating Humidity | 10% to 90%, relative, non-condensing | Storage Humidity | 10% to 90%, relative, non-condensing |
| Certification (Safety) | UL 60950-1, CSA 22.2, EN 60950-1, IEC 60950-1 | Certification (EMC) | FCC Part 15 Class A, CE, EN 55032 |
| Box Contents | Switch, Power Cord, Mounting Kit, Console Cable | Warranty | Limited Lifetime Warranty |

Want to Buy

[Order Now](#) [Get a Quote](#)

Why Layer23-Switch.com

As a leading network hardware supplier, Layer23-Switch.com focuses on original new ICT equipment of Cisco, H3C, Juniper, etc.

200+ Countries we Sold **18,000+** Customers Trusted **\$20,000,000** Inventory Available **50%-98%** Off Global List Price **100%** Safe Online Shopping

Contact Us

- WhatsApp: [+8617181189993](#)
- Wechat: [layer23-switch](#)
- Telegram: [layer23_switch](#)
- Email: sales@layer23-switch.com

Need Price and Availability for C1300-24P-4G?

View product details, request a quote, or check current stock from Layer23-Switch.

[View Product Details & Request a Quote](#)