

BRAND NEW &amp; VERIFIED



## VERIFIED PRODUCT DATASHEET

# C8300-2N2S-4T2X

Cisco Network Hardware Specification, Availability and Quote Reference

<b>Product Model</b>	<b>C8300-2N2S-4T2X</b>
<b>Document Type</b>	<b>Product Datasheet</b>
<b>Condition</b>	<b>Brand New, Original and Verified</b>
<b>Supplier</b>	<b>Layer23-Switch.com</b>

<b>200+</b> Countries Sold	<b>18,000+</b> Customers Trusted	<b>\$20M</b> Inventory Available	<b>1-Year</b> Warranty Support
-------------------------------	-------------------------------------	-------------------------------------	-----------------------------------

## Need Price or Availability?

View product details, check stock, or request a fast quotation from Layer23-Switch.

[View Product Page & Request a Quote](#)



## C8300-2N2S-4T2X Datasheet

The Cisco C8300-2N2S-4T2X datasheet provides verified specifications, key features, and application scenarios. This document helps engineers and IT buyers quickly evaluate the C8300-2N2S-4T2X and integrate it into enterprise or service provider networks with confidence.

[Read More](#) | [Quote](#)

---

## Key Features

### Maximum Modular Expansion

2RU Versatility. This platform is built for growth. With two Service Module (SM) slots and two NIM slots, it offers double the expansion capacity of 1RU models. You can simultaneously run high-density Ethernet switches, complex voice gateways (T1/E1/FXS), and cellular backups, consolidating multiple devices into one.

### High-Speed 10G WAN Connectivity

Built-in Fiber Uplinks. Equipped with two native 10 Gigabit SFP+ ports, the C8300-2N2S-4T2X connects directly to high-speed fiber internet or MPLS handoffs. This ensures that your branch WAN bandwidth is never the bottleneck, even when handling heavy cloud traffic or large file replications.

### Cloud-Scale SD-WAN Performance

Optimized for SASE. Engineered to handle the rigorous demands of SD-WAN and SASE architectures. The multi-core x86 processor accelerates encryption, deep packet inspection, and application visibility, ensuring that security services do not degrade network throughput.

### Integrated Edge Compute

Server-Grade Power. The dual SM slots are perfect for hosting Cisco UCS-E Series compute modules. This allows you to run mission-critical business applications, virtualized network functions (VNFs), or local analytics at the branch edge, reducing latency and dependence on the data center.

### Voice & Unified Communications

Rich Media Support. Supports a wide range of analog and digital voice modules. It acts as a comprehensive branch voice gateway (CUBE/SRST), enabling reliable local survivability for IP phones and seamless integration with SIP trunking providers.

### Hardware-Accelerated Security

Threat Defense. Features dedicated hardware resources for crypto operations. It supports enterprise-grade firewalling, intrusion

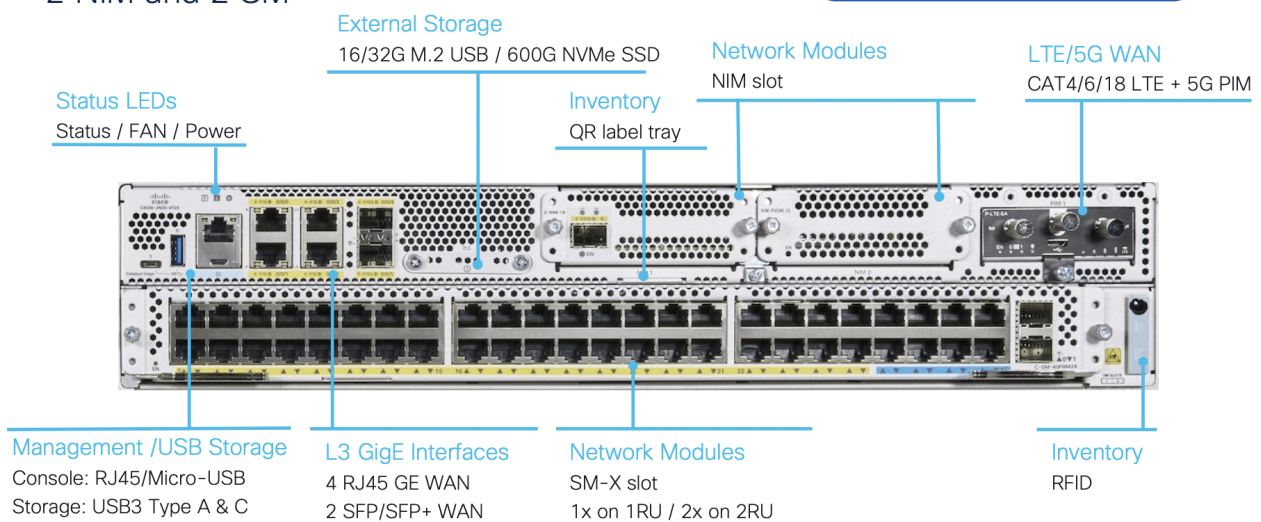
prevention (Snort), and URL filtering natively, providing a robust first line of defense for direct internet access at the branch.

## C8300-2N2S-6T Front View

### C8300-2N2S Front View

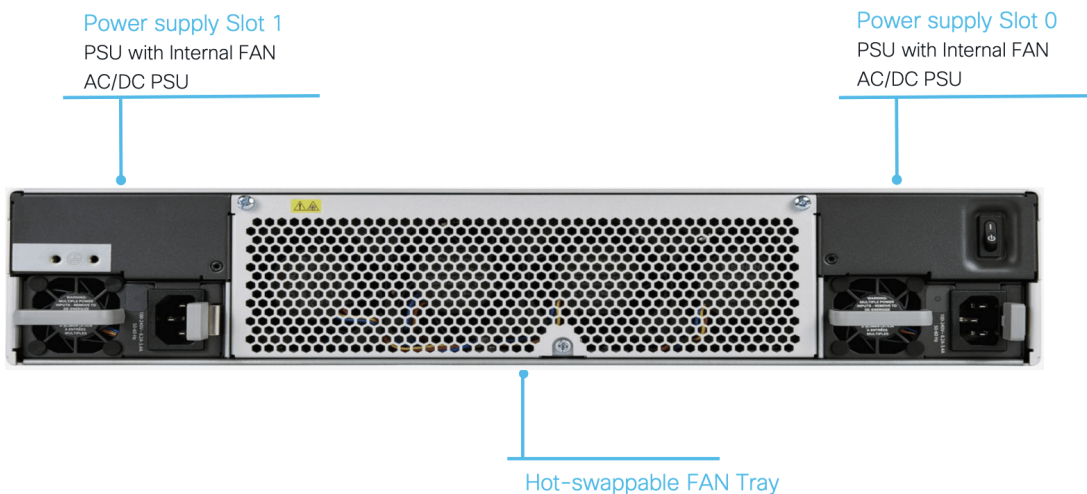
2 NIM and 2 SM

C8300-2N2S-6T: 4x RJ45, 2x SFP  
 C8300-2N2S-4T2X: 4x RJ45, 2x SFP+



## C8300-2N2S-4T2X Rear View

## C8300-2N2S Rear View



## Specification

Parameter	Details	Parameter	Details
<b>Model SKU</b>	C8300-2N2S-4T2X	<b>Series Family</b>	Cisco Catalyst 8300 Series
<b>Form Factor</b>	2RU Rack Mount	<b>Built-in WAN Ports</b>	2x 10G SFP+, 4x 1G RJ-45
<b>Service Module (SM) Slots</b>	2 (Single or Double-wide)	<b>NIM Slots</b>	2
<b>PIM Slot (Pluggable Interface)</b>	1 (For 4G/5G)	<b>Processor</b>	Intel x86 Multi-Core
<b>IPSec Throughput (IMIX)</b>	18 Gbps	<b>IPSec Throughput (1400B)</b>	19 Gbps
<b>IPv4 Forwarding Throughput</b>	19.7 Gbps	<b>SD-WAN Overlay Tunnels</b>	6,000
<b>Access Control Lists (ACLs)</b>	4,000	<b>IPv4 Route Scale</b>	4M (Max with 32G RAM)
<b>IPv6 Route Scale</b>	4M (Max with 32G RAM)	<b>NAT Sessions</b>	2M (Max)
<b>Firewall Sessions</b>	2M (Max)	<b>DRAM Memory</b>	16 GB (Default) / 32 GB (Max)

Parameter	Details	Parameter	Details
<b>Flash Memory</b>	8 GB (Onboard)	<b>M.2 Storage</b>	16 GB (Default) / Up to 600 GB
<b>USB Ports</b>	2x USB 3.0 Type A, 1x USB Console	<b>Management Interface</b>	1x Gigabit Ethernet (RJ-45)
<b>Console Port</b>	1x RJ-45, 1x Micro-USB	<b>Power Supply Type</b>	Dual Redundant Hot-Swappable (AC/DC)
<b>AC Input Voltage</b>	100 to 240 VAC	<b>Max Power Consumption</b>	450 W (Fully Loaded)
<b>System Weight</b>	26.0 lb (11.79 kg) Empty	<b>Height</b>	3.5 in (8.89 cm)
<b>Width</b>	17.25 in (43.82 cm)	<b>Depth</b>	18.5 in (46.99 cm)
<b>Airflow</b>	Side-to-Side / Front-to-Back (Bezel)	<b>Fans</b>	Field-Replaceable Fan Tray
<b>Operating Temperature</b>	32°F to 104°F (0°C to 40°C)	<b>MTBF</b>	477,220 Hours
<b>Safety Certifications</b>	UL 60950-1, IEC 60950-1	<b>EMC Certifications</b>	FCC Part 15 Class A, EN 55032

## Want to Buy

[Order Now](#) [Get a Quote](#)

## Why Layer23-Switch.com

As a leading network hardware supplier, Layer23-Switch.com focuses on original new ICT equipment of Cisco, H3C, Juniper, etc.

**200+** Countries we Sold    
**18,000+** Customers Trusted    
**\$20,000,000** Inventory Available    
**50%-98%** Off Global List Price    
**100%** Safe Online Shopping

## Contact Us

- WhatsApp: [+8617181189993](https://wa.me/8617181189993)
- Wechat: [layer23-switch](https://weixin.qq.com/q/layer23-switch)
- Telegram: [layer23\\_switch](https://t.me/layer23_switch)

- Email: [sales@layer23-switch.com](mailto:sales@layer23-switch.com)

## **Need Price and Availability for C8300-2N2S-4T2X?**

View product details, request a quote, or check current stock from Layer23-Switch.

**[View Product Details & Request a Quote](#)**